

6.5 oz. Westex® DH FR Coverall

Style C065DH



Dual-Hazard Inherently FR Fabric

Maximum Protection!

- 6.5 oz. lightweight inherently FR fabric
- NFPA 2112, UL certified
- NFPA 70E, HRC 2
- Excellent Breathability
- FR protection cannot be washed out or worn away
- Optimized Moisture Management

Maximum Features!

- Pleated bi-swing back gives superior freedom of movement
- Elastic waist provides better comfort
- All exposed metal next to skin (snaps, etc.) are FR fabric covered for maximum protection
- Sewn throughout with FR thread
- Two patch breast pockets, left chest pocket has a pen slot
- Heavy duty, two-way quick release brass zipper
- Two hip pockets with a snap closure on the left hip pocket
- Two swing pockets with internal pass-thrus
- Utility pocket on right leg
- Adjustable sleeve cuffs

Get the Dual Hazard protection you need with both NFPA 2112, UL Certification and NFPA 70E, HRC level 2 protection in a light weight, soft and comfortable Inherently FR Fabric

Style Numbers:

C065DH – 6.5 oz. Westex® DH, Inherently FR Fabric.
Available in Navy Blue and Khaki.

Specifications:

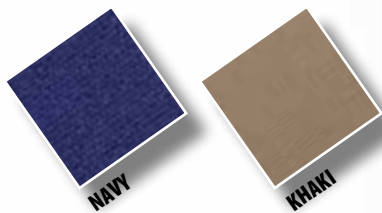
Fabric: 6.5 oz. Westex® DH, Inherently FR Fabric

Standard: NFPA 70E, NFPA 2112, UL Certified

ATPV: 8.9 cal/cm²

HRC: 2

Meets the performance requirements of NFPA 70E and ASTM F1506-08.
Acceptable for use in occupations covered by OSHA Final Rule 1910.269



Lakeland®

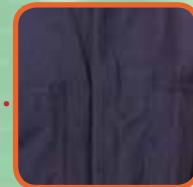
In the USA: Toll Free: 800-645-9291 | Tel: 256-350-3873

Email: info@lakeland.com

In Canada Toll Free: 800-489-9131 | Tel: 519-757-0700 | 519-757-0799

lakeland.com

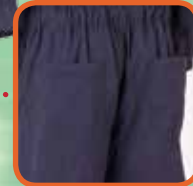
4103/1_16/



Covered snap closures



Pocket labeling helps you quickly identify garment standards!



Two hip pockets – snap closure on left pocket

Pleated bi-swing back gives superior freedom of movement, while the elastic waist provides better comfort!

Westex® DH